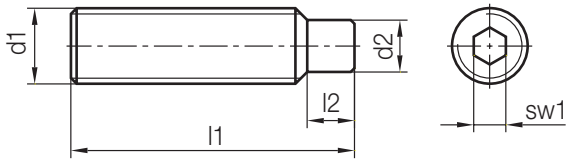




Z34/...

Gewindestift, mit Innensechskant und Zapfen
 Set screw, with Hexagon socket, with dog point
 Tige filetée à six pans creux, à ergott

Mat.: min. 1455 N/mm²
 DIN EN ISO 4028 (DIN 915-45 H)



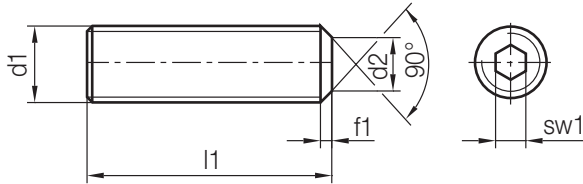
	sw1	l2	d2	d1	l1	Nr./No.
20	2	2	2,5	M 4	10	Z34/ 4x10
	3	3	4	M 6	18	6x18
					25	6x25
					30	8x20
4	4	5,5	M 8	20	8x20	
				30	8x30	
10	5	5	7	M 10		10x30

	sw1	l2	d2	d1	l1	Nr./No.
10	5	5	7	M 10	40	Z34/10x40
					50	10x50
					30	12x30
	6	7	8,5	M 12	40	12x40
45					16x45	
8	8	12	M 16	45	16x45	
				55	16x55	

Z35/...

Gewindestift, mit Innensechskant
Set screw, with Hexagon socket
Tige filetée à six pans creux, à six pans creux

Mat.: min. 1455 N/mm²
DIN EN ISO 4026 (DIN 913-45 H)



2

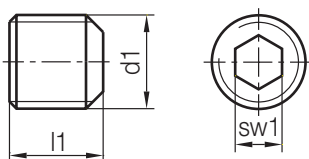
	sw1	f1	d2	d1	l1	Nr./No.
20	1,5	0,5	2	M3	6	Z35/3 x 6
					8	8
					10	10
	2	0,75	2,5	M4	6	Z35/4 x 6
					8	8
					10	10
					12	12
	2,5	0,75	3,5	M5	6	Z35/5 x 6
					8	8
					10	10
					12	12
					16	16
3	1	4	M6	6	Z35/6 x 6	
				8	8	
				10	10	
				12	12	
				16	16	
				20	20	
4	1,25	5,5	M8	8	Z35/ 8 x 8	
				10	10	

	sw1	f1	d2	d1	l1	Nr./No.
20	4	1,25	5,5	M 8	12	Z35/ 8x12
					16	16
					20	20
					25	25
					30	30
					40	40
	5	1,5	7	M10	10	Z35/10x10
					12	12
					16	16
					20	20
10	6	1,75	8,5	M12	12	Z35/12x12
					16	16
					20	20
					30	30
	8	2	12	M16	20	Z35/16x20
					30	30
					40	40

Z351/...

Gewindestift, mit Innensechskant
Set screw, with Hexagon socket
Tige filetée à six pans creux, à six pans creux

Mat.: min. 1455 N/mm²
DIN EN ISO 4026 (DIN 913-45 H)



	sw1	d1	l1	Nr./No.
10	5	M10x1	12	Z351/10x1 x12
	6	M12x1,5		12x1,5x12
	8	M16x1,5	25	16x1,5x25