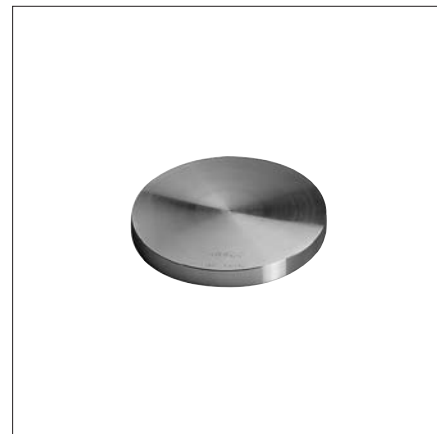


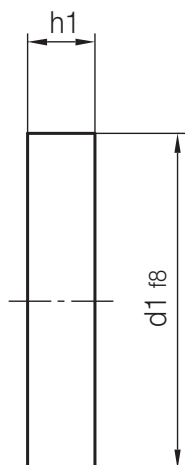
Z7530 /...

Zentrierflansch, ohne Ansatz
 Locating ring, straight
 Rondelle de centrage, sans recentrage

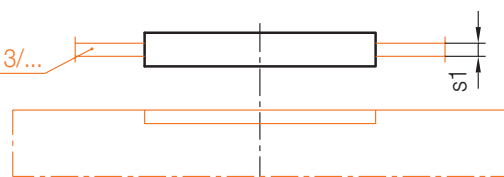
Mat.: 1.1730 / 640 N/mm²



2



Z121/...; Z1212/...; Z1213/...

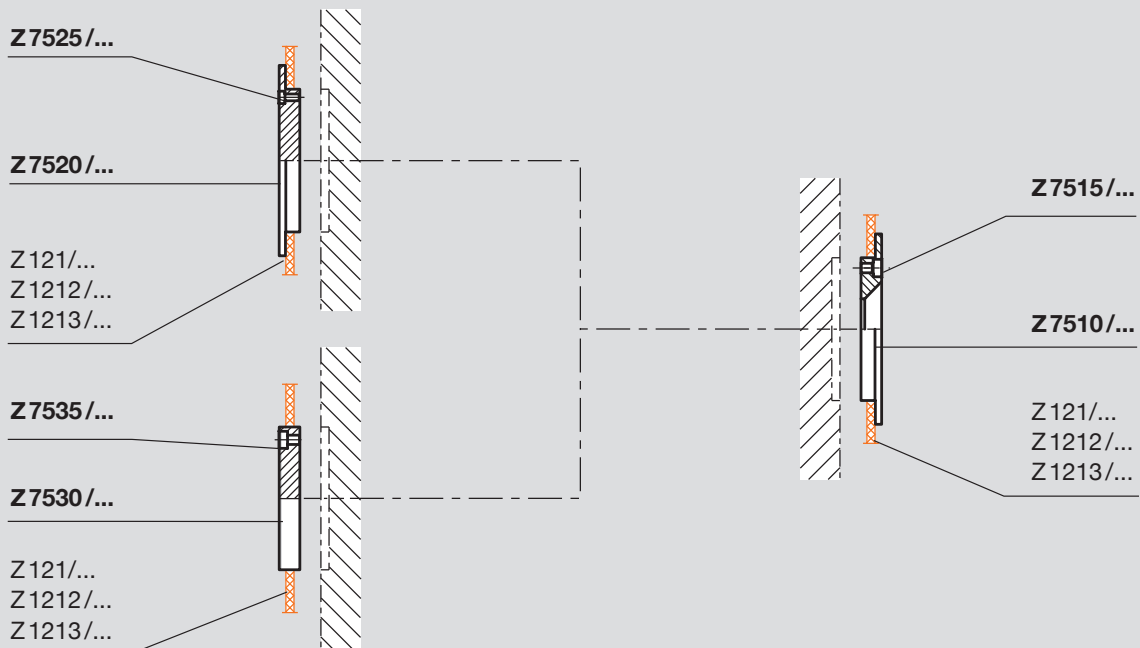


s1	d1	h1	Nr./No.
-	40	6	Z7530/ 40x 6
3		9	40x 9
-	60	8	Z7530/ 60x 8
3		11	60x11
5		13	60x13
-	80	8	Z7530/ 80x 8
3		11	80x11
5		13	80x13
-	90	8	Z7530/ 90x 8
3		11	90x11
-		12	90x12
5		13	90x13
7		15	90x15
8,5		16,5	90x16,5
-	100	8	Z7530/ 100x 8
		12	100x12

s1	d1	h1	Nr./No.
-	110	8	Z7530/ 110x 8
		12	110x12
	120	8	Z7530/ 120x 8
		12	120x12
	125	8	Z7530/ 125x 8
		12	125x12
	130		Z7530/ 130x12
		140	140x12
	150	8	Z7530/ 150x 8
		12	150x12
	160	8	Z7530/ 160x 8
		12	160x12
	175	8	Z7530/ 175x 8
		12	175x12
	200	8	Z7530/ 200x 8
		12	200x12
	250		250x12

Bewegliche Werkzeughälfte
Movable mould half
Demi-moule mobile

Feste Werkzeughälfte
Fixed mould half
Demi-moule fixe

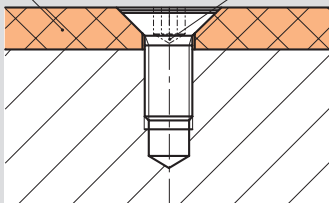


Zur Befestigung der Wärmeisolerplatten sind Senkschrauben Z330/... mit Torx® zu verwenden.

We recommend the countersunk screws Z330/... with Torx® for mounting the thermal insulating sheets.

La fixation des plaques isolantes devra être assurée à l'aide de vis à tête fraisée Z330/... avec Torx®.

Z 121/... Z 1212/... Z 1213/... Z 330/...



Innensechskant beschädigt
Internal hexagon damaged
Tête à 6 pans creux endommagée



Keine Beschädigung mit Torx®
No damage with Torx®
Pas d'endommagement avec Torx®

