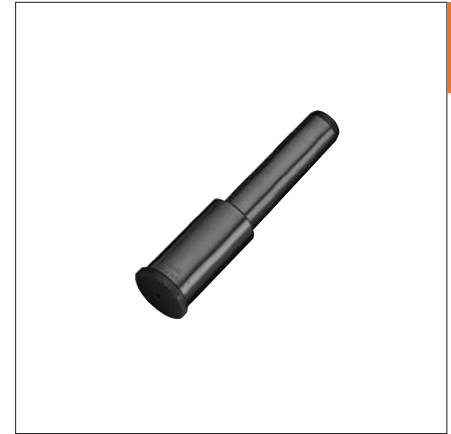
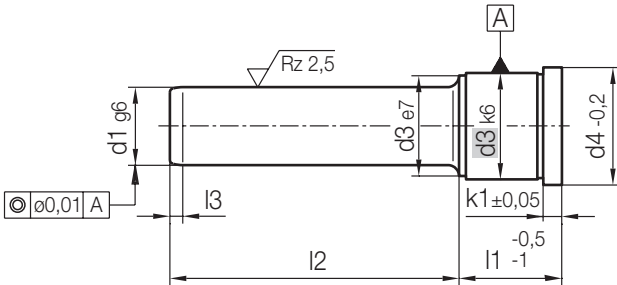


# Z031/...

Führungssäule, DLC, ohne Zentrieransatz  
 Guide pillar, DLC, flush location head  
 Colonne de guidage, DLC, sans plot de centrage

Mat.: ≈ 1.0401 / DLC beschichtet  
 with DLC coating  
 avec revêtement DLC



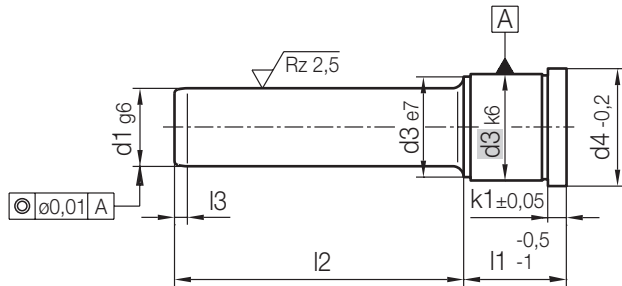
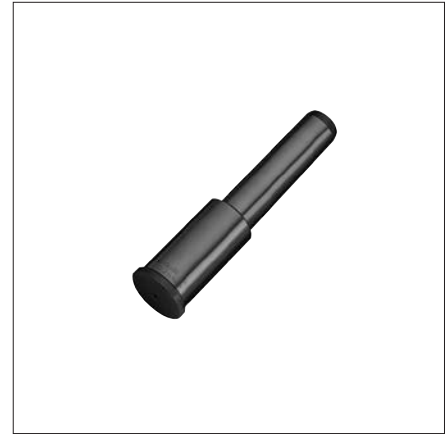
k1	l3	d4	d3	l1	d1	l2	Nr. / No.				
3	4	16	14	22	9	25	Z031/ 22x 9x 25				
						55	55				
					10	25	10x 25				
						55	55				
					27	9	30	27x 9x 30			
						10	30	10x 30			
				36	9	25	36x 9x 25	25	45	45	
								10	25	10x 25	
									45	45	
								46	9	30	46x 9x 30
									45	45	
								10	30	10x 30	
6	7	25	20	22	14	20	Z031/ 22x14x 20				
						35	35				
						55	55				
						65	65				
						70	70				
						90	90				
					15	20	15x 20				
						35	35				
						55	55				
						65	65				
						70	70				
						90	90				
				27	14	20	27x14x 20	20	35	35	
									45	45	
									55	55	
									65	65	
									85	85	
									105	105	
15	20	15x 20	20	35	35						
				45	45						
				55	55						
				65	65						
				70	70						
				85	85						
				105	105						
				85	85						

k1	l3	d4	d3	l1	d1	l2	Nr. / No.								
6	7	25	20	27	15	105	Z031/ 27x15x105								
						14	35	14x 35							
						55	55								
						65	65								
						75	75								
						95	95								
					15	35	15x 35	35	55	55					
									65	65					
									75	75					
									95	95					
								46	14	35	46x 14x 35				
									45	45					
				15	35	15x 35	35	45	45						
								65	65						
							56	14	56x 14x 35	35	55	55			
											75	75			
										15	35	15x 35	35	55	55
														75	75
				66	14	66x 14x 55							55	75	75
														105	105
								125	125						
							20	35	20x 35				35	55	55
											60	60			
											70	70			
	80	80													
	85	85													
	105	105													
	125	125													
	85	85													
31	26	27	27x18x 35	18	35	35									
					55	55									
					60	60									
					70	70									
					80	80									
					85	85									
					105	105									
					125	125									
					20	35	20x 35								
					55	55									
					60	60									
					70	70									
	80	80													
	85	85													

# Z031/...

Führungssäule, DLC, ohne Zentrieransatz  
 Guide pillar, DLC, flush location head  
 Colonne de guidage, DLC, sans plot de centrage

Mat.: ≈ 1.0401 / DLC beschichtet  
 with DLC coating  
 avec revêtement DLC



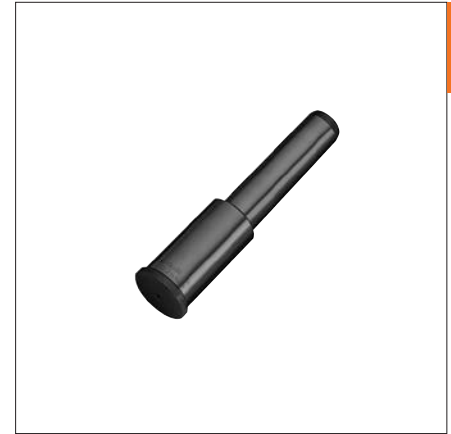
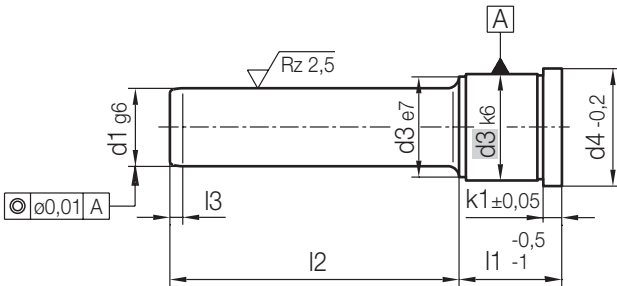
k1	l3	d4	d3	l1	d1	l2	Nr. / No.		
6	7	31	26	27	20	105	Z031/ 27x20x105		
						125	125		
					36	18	35	Z031/ 36x18x 35	
							45	45	
						50	50		
						55	55		
						65	65		
						75	75		
						80	80		
						95	95		
						115	115		
						135	135		
					46	18	45	Z031/ 46x18x 45	
							65	65	
							85	85	
							135	135	
							165	165	
							20	45	20x 45
				65				65	
				85		85			
				135		135			
				165		165			
				56		18		35	Z031/ 56x18x 35
								55	55
							75	75	
						20	35	20x 35	
					55		55		
					75		75		

k1	l3	d4	d3	l1	d1	l2	Nr. / No.			
6	7	31	26	56	20	95	Z031/ 56x20x 95			
						66	66x18x 55			
					75	75				
					76	18	55	20x 55		
							75	75		
						86	18	55	Z031/ 76x18x 55	
								75	75	
							20	55	20x 55	
								75	75	
					35	30	27	22	45	Z031/ 27x22x 45
									70	70
								85	85	
							24	45	105	105
									125	125
									165	165
						36		22	45	Z031/ 36x22x 45
										55
									24	75
				80			80			
				95			95			
				24			45	24x 45	45	24x 45
					55	55				
					70	70				
					24	45	24x 45	75	75	
								80	80	
								95	95	
						24	45	24x 45	115	115
									135	135
									165	165

# Z031/...

Führungssäule, DLC, ohne Zentrieransatz  
 Guide pillar, DLC, flush location head  
 Colonne de guidage, DLC, sans plot de centrage

Mat.: ≈ 1.0401 / DLC beschichtet  
 with DLC coating  
 avec revêtement DLC



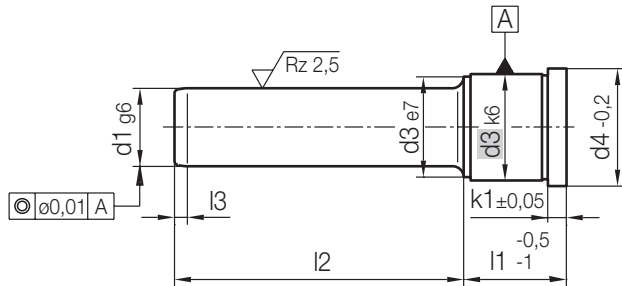
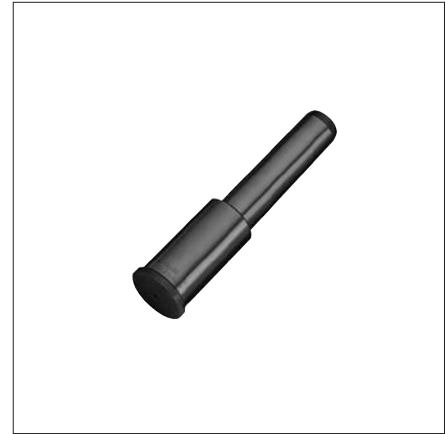
k1	l3	d4	d3	l1	d1	l2	Nr. / No.				
6	7	35	30	36	24	165	Z031/ 36x24x 165				
							46	22	25	46x22x 25	
										45	45
										50	50
										60	60
										65	65
										70	70
										85	85
										105	105
										125	125
										165	165
							24	25	25	24x 25	
										45	45
										50	50
										60	60
										65	65
										70	70
										85	85
				105	105						
				125	125						
				56	22	25	Z031/ 56x22x 25				
							45	45			
							55	55			
							75	75			
							95	95			
							115	115			
							165	165			
							24	25	25	24x 25	
										45	45
				55	55						
				75	75						
				95	95						
				115	115						
				165	165						
				66	22	55				Z031/ 66x22x 55	
										75	75
95	95										
115	115										
155	155										
24	55	24x 55									

k1	l3	d4	d3	l1	d1	l2	Nr. / No.								
6	7	35	30	66	24	75	Z031/ 66x24x 75								
							76	22	45	Z031/ 76x22x 45					
										95	95				
										55	55				
										75	75				
										95	95				
										115	115				
										24	45	25	24x 45		
													55	x55	
													75	75	
													95	95	
							115	115							
							115	115							
							86	22	55	Z031/ 86x22x 55					
										75	75				
										95	95				
										24	55	25	24x 55		
													75	75	
				95	95										
				96	22	55	Z031/ 96x22x 55								
							75	75							
							95	95							
							24	55	25	24x 55					
										75	75				
										95	95				
				116	22	155	Z031/116x22x 155								
							24	24x 155							
							136	22	135	Z031/136x22x 135					
										24	24x 135				
										47	42	27	30	65	Z031/ 27x30x 65
															32
				36	30	75									Z031/ 36x30x 75
															95
							115	115							
							155	155							
							32	75	25			32x 75			
												95	95		
				115	115										
				46	30	45	Z031/ 46x30x 45								
							95	95							
							115	115							
							155	155							
115	115														
155	155														

# Z031/...

Führungssäule, DLC, ohne Zentrieransatz  
 Guide pillar, DLC, flush location head  
 Colonne de guidage, DLC, sans plot de centrage

Mat.: ≈ 1.0401 / DLC beschichtet  
 with DLC coating  
 avec revêtement DLC



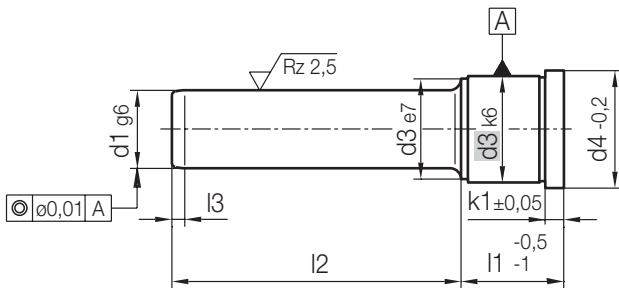
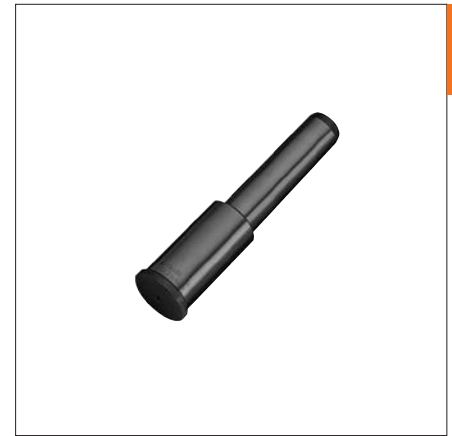
k1	l3	d4	d3	l1	d1	l2	Nr. / No.	
6	7	47	42	46	30	65	Z031/ 46x30x 65	
						85	85	
						105	105	
						125	125	
						165	165	
					32	45	32x 45	
						65	65	
						85	85	
						105	105	
						125	125	
						165	165	
						56	30	55
				75				75
				95				95
				115				115
				135				135
				32			55	32x 55
					75		75	
					95		x95	
					115		115	
					135		135	
					175		175	
					66		30	55
				75		75		
				95		95		
				115		115		
				135		135		
				32		55	32x 55	
						75	75	
						95	95	
						115	115	
						135	135	
						175	175	
						76	30	55
				75	75			
				95	95			
				115	115			
				135	135			
				32	55		32x 55	
					75		75	
					95		95	
					115		115	
					135		135	
					175		175	

k1	l3	d4	d3	l1	d1	l2	Nr. / No.			
6	7	47	42	76	30	155	Z031/ 76x30x 155			
						32	55	32x 55		
						75	75			
						95	95			
						115	115			
					86	30	55	Z031/ 86x30x 55		
							75	75		
							95	95		
							115	115		
							155	155		
						32	55	32x 55		
							75	75		
				95			95			
				115			115			
				155			155			
				96			30	75	Z031/ 96x30x 75	
								95	95	
					115	115				
					155	155				
					32	75		32x 75		
					32	75	75			
						95	95			
						115	115			
						155	155			
						116	30	75	Z031/116x30x 75	
								115	115	
								155	155	
				32	75			32x 75		
				115	115					
				32	75		75			
					95		95			
					115		115			
					155		155			
					136		30	95	Z031/136x30x 95	
								115	115	
								155	155	
				32		95		32x 95		
				115		115				
				32		95	95			
						115	115			
						155	155			
						156	30	115	Z031/156x30x 115	
								155	155	
								32	115	32x 115

# Z031/...

Führungssäule, DLC, ohne Zentrieransatz  
 Guide pillar, DLC, flush location head  
 Colonne de guidage, DLC, sans plot de centrage

Mat.: ≈ 1.0401 / DLC beschichtet  
 with DLC coating  
 avec revêtement DLC



k1	l3	d4	d3	l1	d1	l2	Nr. / No.
6	7	47	42	156	32	155	Z031/156x32x155
				196	30	195	Z031/196x30x195
				32			32x195
10	10	60	54	46	40	95	Z031/46x40x 95
					42		
				56	40	75	Z031/ 56x40x 75
					115		115
					195		195
				42	75		42x 75
					115		115
					155		155
				66	40	75	Z031/ 66x40x 75
					42		42x 75
				76	40	115	Z031/ 76x40x115
					175		175
					42	115	42x115
					175		175
				86	40	75	Z031/ 86x40x 75
					42		42x 75
				96	40	75	Z031/ 96x40x 75
						115	115
						155	155
					42	75	42x 75
						115	115
						155	155
				116	40	95	Z031/116x40x 95
						195	195
42	95	42x 95					
136	40	215	Z031/136x40x215				
		42	42x215				
156	40	155	Z031/156x40x155				
		215	215				
	42	155	42x155				
		215	215				
176	40	135	Z031/176x40x135				
		175	175				
	42	135	42x135				
			175				

k1	l3	d4	d3	l1	d1	l2	Nr. / No.	
10	10	60	54	196	40	155	Z031/196x40x155	
					195		195	
					235		235	
					42	155	42x155	
						195	195	
					235	235		
20	10	86	80	156	60	155	Z031/156x60x155	
					196		196x60x175	
					246	195	246x60x195	
					116	50	135	Z031/116x50x135
					136		136x50x135	
196		196x50x175						